



**2020**

835 E. 10TH ST. SEYMOUR, IN 47274  
(812)522-7200 | [WWW.JMARAIL.COM](http://WWW.JMARAIL.COM)

# INDEX

Page



Abloy manufactures high security locks and locking systems for the rail industry with lifetime padlock coverage. Ideal for use in rail yard maintenance areas, and on gates, switches, signals, communication towers, locomotives and rail cars.

4



Gulf Coast Turbocharger has been serving the rail and marine markets since 2003. Our combined experience of over 50 years will provide the best quality turbos possible. We meet or exceed all OEM specifications and are very stringent in all of our rebuild processes.

5



CML has been providing lighting solutions since 1910 and is at the forefront of producing Locomotive Bulbs to the rail industry. They manufacture halogen headlight and ditch light bulbs. These bulbs are FRA compliant and halogen technology extends filament life.

6



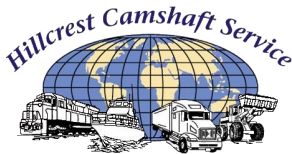
With decades of experience providing locomotive batteries, JMA Rail Products proudly presents its superior locomotive battery. Having over 40 years of battery design and knowledge, we have created a true locomotive "Starting Battery."

7



EngineAir is a Remanufacturer of EMD diesel roots-style blowers, EMD aftercoolers, GE Intercoolers, GE and EMD oil coolers, GE and EMD water pumps, EMD oil pumps, GE and EMD fuel pre-heaters, EMD governor drives, GE and EMD radiators, EMD pressure pumps, and EMD scavenge pumps. EngineAir is AAR M1003 and ISO 9001-2015 certified.

8, 9



Supplies diesel engine rebuilders all over the world with new and precision remanufactured camshafts, crankshafts, fuel injection cams and lifters. Hillcrest products have earned a reputation of quality, because the processes they use make them more durable and ensure a longer life.

10, 11



JMA Rail Products supplies a complete line of locomotive components including air compressors, power assemblies, traction motors, filters, main generators, brake valves and composite brake shoes.

12, 13



New Vision manufactures Ditch Light Kits, replacement parts, replacement bulbs, Locomotive Ceiling Kits, Locomotive LED walkway lights, traction motor lugs, blade to gladhand adapters, and ditch light housings.

14, 15



United Safety designs, engineers, and manufactures high quality seats for the locomotive industry. As a leader in the industry, United Safety continues to develop the most durable and ergonomically designed seats to reduce fatigue and stress. United Safety has been ISO registered since 1997.

16, 17



**POWER PARTS SIGN COMPANY**  
A DIVISION OF RI-DEL MFG, INC.

Provides signs, decals and other safety products for the entire railroad industry. Custom signs, fusee holders, cross bucks, and etch and fill plates are also available.

18



**BUILT TO MAKE YOU BETTER®**

Provides maintenance, repair, and operating supplies for locomotive, car and track. Provides a complete turn-key program for your company's inventory management. Their service is designed to reduce the "wastes" in your organization, while keeping you on track.

19

JMA Railroad Supply and all their clients provide aftermarket replacement parts for EMD and GE Locomotives.

We do not claim to be an authorized distributor for EMD or GE nor claim to offer any OEM factory parts.

## President's Message

Since becoming president of JMA Railroad Supply in 2012, we have continued to move JMA forward with the same values and principles as Jack Matthew's, the founder of JMA, established back in 1984. Our focus is to serve our customer's needs by providing quality products, at a competitive price, in a timely manner, and to provide the best customer service possible.

Originally started in 1984 as a consulting company working in various industrial segments, JMA has evolved into a Manufacturers Representative Sales Company, providing railroad supplies and equipment to the Short Lines, Industrials, Rebuilders, and Class I railroads. We have strived to align ourselves with quality companies that have the same values of taking care of the customer as JMA does.

JMA currently represents 11 quality manufacturers to the Rail Industry that supply everything from \$5 replacement parts to complete locomotives. With 36 years of commitment to the Rail Industry, our goal is to continue to expand our product offering and provide the best customer service possible.

"From coupler to coupler, we have you covered."

Sincerely,  
Bill Stevens



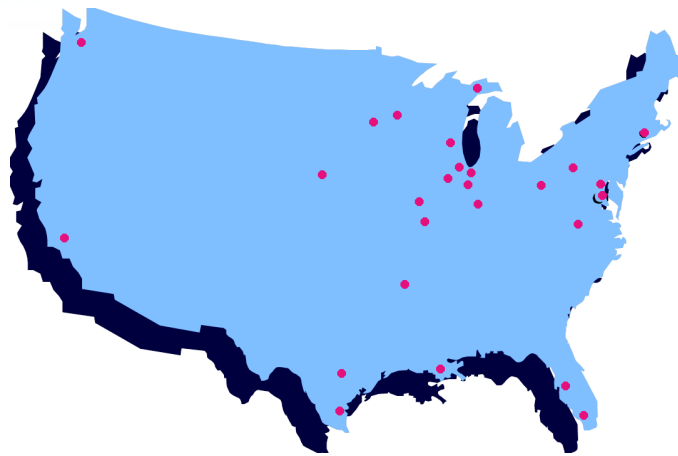
A handwritten signature in black ink that reads "Bill Stevens".

President  
JMA Railroad Supply

## Mission Statement

JMA Railroad Supply Company is committed to representing manufacturers that provide the highest quality products to the Railroad Industry with competitive pricing. It is our goal to provide the best possible customer service in the quickest possible time in order to fulfill our customer's requirements. JMA will continuously strive to improve its ability to provide excellent service through cultivating relationships with its customers and clients.

## Shipping Locations



## Contact Us

For Short Lines, Industrials & Rebuilders, Call Our Sales Team Manager Matt Kopitzke;  
(812)522-7200 or Email [mkopitzke@jmarail.com](mailto:mkopitzke@jmarail.com).

For Class I Sales, Contact Our Class I Sales Team Manager Jeff Bink;  
(816)804-1622 or Email [jbink@jmarail.com](mailto:jbink@jmarail.com).



## High Security Electronic Locks & Keys



**Multiple Locking Systems Available**



**Electronic Key Access and Auditing**



**Bluetooth Program/Auditing**

- Secure & Safe
- Cost efficient & wireless
- Remotely controlled & adaptable
- Easy to use & encrypted
- Time based & interchangeable

ABLOY® PROTEC<sup>2</sup>, which is based on the patented rotating disc cylinder mechanism, takes care of the mechanical security at your site, while electronic CLIQ technology allows flexible control of keys, access rights and audit trails. ABLOY® PROTEC<sup>2</sup> CLIQ combines both technologies into one effective solution.

## Rail Switch Locks, Bungalow Locks & Shop Locks

Lifetime Functional Warranty



### FEATURES

- Multiple designs to fit any application
- Dual stainless steel ball bearings for heel/toe locking
- Accessories available
- Patented key control
- Maximum resistance against corrosion

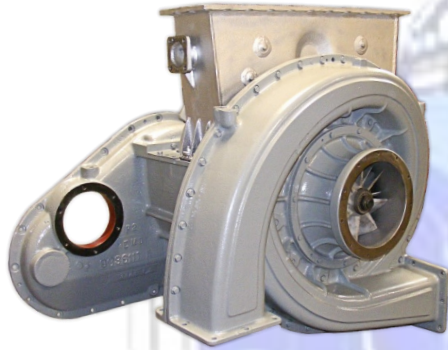
- Boron steel shackles
- Extra large drainage holes for long lasting performance
- Rotating disc keying cylinder prevents lock picking
- The unique cylinder mechanism offers superior master-keying features



Over 50 years  
of combined  
experience!



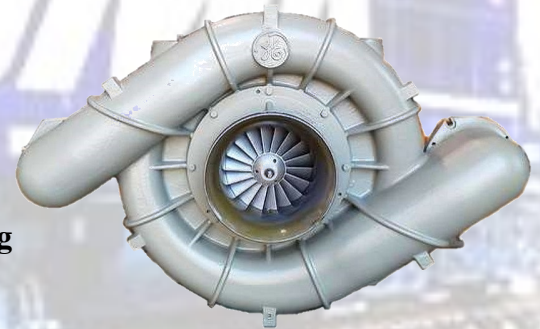
Serving the  
Rail & Marine  
Market Since 2003



Gulf Coast Turbocharger has been serving the rail and marine markets since 2003. Our combined experience of over 50 years will provide the best quality turbos possible. We meet or exceed all OEM specifications and are very stringent in all of our rebuild processes.

We have a core pool in place for a variety of different turbos. If we are unable to offer UTEX we can offer the Repair & Return options in a timely manner.

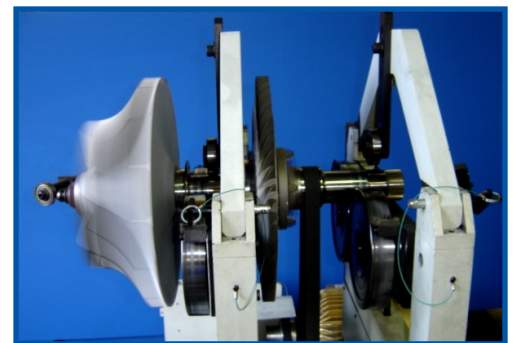
- 2 Year Warranty
- Meets or exceeds all OEM rebuild specifications
- Dynamically balanced rotors far exceeding acceptable parameters
- Incorporates magnetic particle & florescent dye penetration testing for part inspection
- Core pool for *Unit Exchange, UTEX*



Our *Hofmann Horizontal Balancer* enables us to balance our rotors to far exceed the original OEM specifications for longer lasting turbos!

***Servicing EMD, GE, and Alco!***

*Turbo parts are also available!*



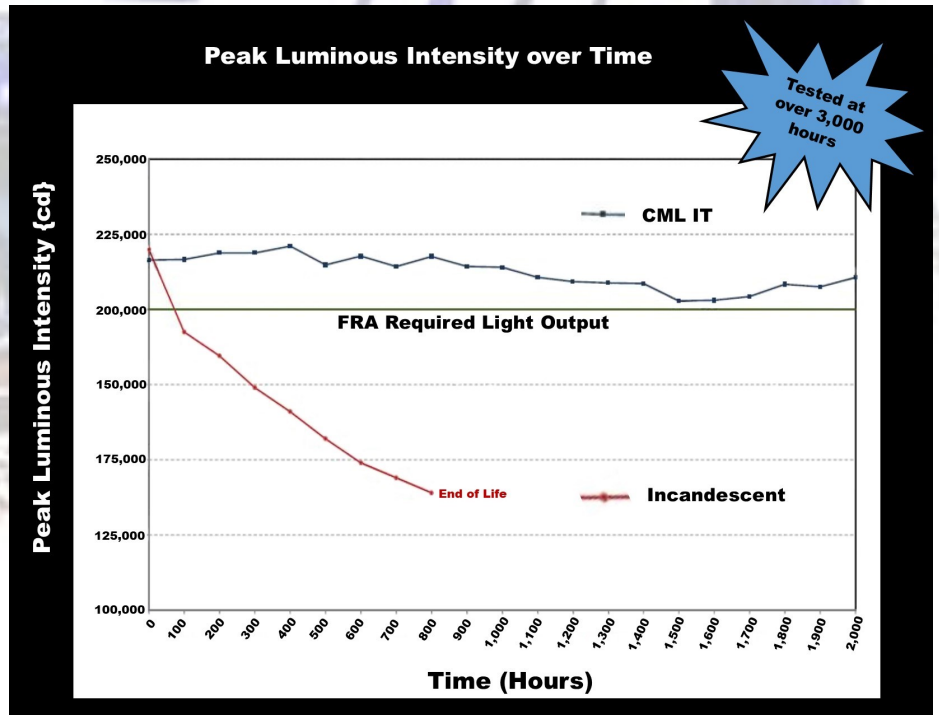
Call (812)522-7200  
Email [jmasales@jmasales.com](mailto:jmasales@jmasales.com)



## Halogen Headlight and Ditch Light Bulbs

### Features

- Our headlight bulb is 32v/250w & Our ditch light bulb is 74v/400w
- Equivalent in design and intensity to the PAR-56 200-watt, 30-volt lamp
- Suitable for use in single or dual-lamp locomotive headlights and auxiliary locations
- If used in both positions in a dual-lamp headlight, the locomotive will remain compliant with a single operational lamp.
- Halogen technology extends lamp life for less change outs.
- Exceptional resistance to shock and vibration.
- Halogen technology extends filament life.
- Drop-in replacement reduces maintenance costs and downtime.
- FRA compliant.



**All  
Models!**

**JMAXX**  
Locomotive Batteries

**Always  
in  
Stock!**

With over a decade of experience providing locomotive batteries, we have created a true locomotive “Starting Battery!” JMAXX provides a battery line that is built to the highest quality standards.



**19% more lead per plate  
than our leading competitor!**

- ◆ Heaviest Strap/Intercell Connectors in the Industry!
- ◆ Double layer of Glass Wrapping for Maximum Material Retention and Life!
- ◆ Cells are 100% cycled prior to shipment to insure Full Capacity!
- ◆ Cell Equalization prior to shipment for Longer Life!
- ◆ Custom Box Grid design on our plates for Maximum Capacity and Life!

**Now Introducing our ELITE POWER Battery**

| JMA P/N     | Volts | 8 HR Rating | Length | Width | Height |
|-------------|-------|-------------|--------|-------|--------|
| JMA-M4523   | 8     | 333         | 24"    | 7.5"  | 18"    |
| JMA-M4517   | 8     | 443         | 28"    | 8"    | 18"    |
| JMA-M4525   | 8     | 667         | 28"    | 10.5" | 18"    |
| JMA-U519    | 32    | 500         | 34"    | 27"   | 21"    |
| JMA-U523EP* | 32    | 610         | 34"    | 27"   | 21"    |
| JMA-U525    | 32    | 667         | 43.5"  | 27"   | 21"    |
| JMA-U531EP* | 32    | 832         | 43.5"  | 27"   | 21"    |

\* Denotes Elite Power Battery

\* Our JMAXX Elite Power battery is the same size battery with 22-25% more output than our standard battery

**6 Year Warranty!  
2 Year Full  
4 Year Pro-Rated**



**Call (812)522-7200  
Email [jmasales@jmasales.com](mailto:jmasales@jmasales.com)**

# ENGINEAIR INC

Many options available! Call us for details!  
 New, Unit Exchange, Rebuilt/Outright, & Repair/Return

## Roots Blowers



### #8369676 Right Bank

Replaces  
 #8069492, #9080513  
 #8074273, #8379666

### #8369677 Left Bank

Replaces  
 #8069433, #9080512  
 #8074274, #8379667



## Oil Coolers

### Oil Coolers for GE Engines



- #41D711310G2
- #41D721253G1
- #41D725794G1
- #41D728627G2
- #41D723279G2
- #84A213197AGP2 (EVO)



### Switch Engine/ Tube & Bundle Oil Cooler

- 27" 9544026/8225303
- 36" 9544027, 8373361, 8365865
- 40 1/2" - 9544028

## Auxiliary Generator Drive



### Turbo

- #8460738
- or
- #40044946

### Roots Blown

- #8084664



## Intercoolers for GE Engines

- |             |             |
|-------------|-------------|
| #128 x 1360 | #128 x 1361 |
| #128 x 1649 | #128 x 1650 |
| #128 x 1692 | #128 x 1693 |
| #128 x 1779 | #128 x 1780 |
| #128 x 1877 | #128 x 1878 |

## Oil Coolers for EMD Engines

- |                  |                  |
|------------------|------------------|
| #40005228 6"     | #8272136 6"      |
| #8412061 6"      | #9558515 6"      |
| #9259413 4"      | #8250727 4"      |
| # 9095445 4" R&R | #10569639 6" R&R |



## Governor Drive

EMD #40085329



## Aftercoolers For EMD Engines

- #8409891 10 Row 2 Pass, 2 Flange
- #8365645 10 Row 2 Pass, 2 Flange
- #9541961 12 Row 2 Pass, 2 Flange
- #40020885 12 Row 4 Pass, 2 Flange
- #40046710 12 Row 4 Pass, 4 Flange
- #40113590, #40046710 12 Row 4, Flange, Small
- #40113591 12 Row, 4 Pass, 4 Flange, Large





Since 1988, EngineAir has been proudly remanufacturing mechanically bonded heat exchange components to the Class I's, Short Lines, Industrials & Rebuilders. We take great pride in the quality of our rebuilds and provide the best rebuilds in the industry. EngineAir is ISO 9001-2015 & AAR M1003 registered.

ASSOCIATION OF AMERICAN RAILROADS  
QUALITY ASSURANCE PROGRAM CERTIFICATION



### Water Pumps

#### For EMD Engines LEFT BANK



#40004234 Large  
REPLACES: #9530407, #9332325, #8347607  
#9336390, #8269638 Medium  
#40004236 Small  
REPLACES: #8058624, #8122874, #9516925

#### For EMD Engines RIGHT BANK

#40004235 Large  
REPLACES: #9511979, #9530406, #8249002,  
#9510677  
#8269664, #8296348 Medium  
#40004237 Small  
REPLACES: #8058625, #8122879



#### For GE Engines

#125x1111, #125x1115 #125x1072-1

### GE Oil Pumps

V16= #139x1271  
V12= #139x1297  
#139x1296  
#139x1246



### Radiators

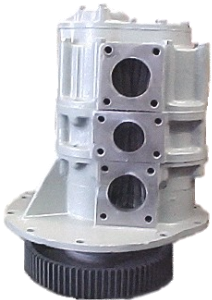
#### For GE Engines

#41D711033G10  
#84D701689P1  
#41D12040G4



### 4 Stage Scavenging Pump

EMD #40000226



### 2 Stage Pressure Pump

EMD #8122949



### 3 Stage Scavenging Pump

EMD #8296459

### New and Remanufactured Radiators for EMD Engines

|           |                    |
|-----------|--------------------|
| #8127126  | Single 4" Radiator |
| #40037925 | Double 4" Radiator |
| #40037937 | Triple 4" Radiator |
| #8490482  | Single 6" Radiator |
| #9583761  | Double 6" Radiator |
| #9583760  | Triple 6" Radiator |
| #9504784  | Triple 6" Radiator |
| #9575387  | Triple 8" Radiator |
| #40045650 | Quad 8" Radiator   |

### Fuel Pre-Heaters

For EMD Engines  
#9517269, #9333522



For GE Engines  
#41C619684P2  
#41C640369G1



**Call (812)522-7200**  
**Email [jmasales@jmasales.com](mailto:jmasales@jmasales.com)**

*Hillcrest Camshaft Service*



## **Setting the Standard for Excellence!**



Hillcrest Camshaft Service specializes in new and remanufactured industrial camshafts. We also provide specialized chrome-plating and grinding on just about anything that undergoes excessive wear from the bearings or seals.

**We stock a full range of industrial camshafts ready for immediate shipment, for 567, 645 & 710 engines.  
New available / rebuilt units for UTEX.**

**Repair/Return options for GE, Alco, EMD, and Caterpillar!**

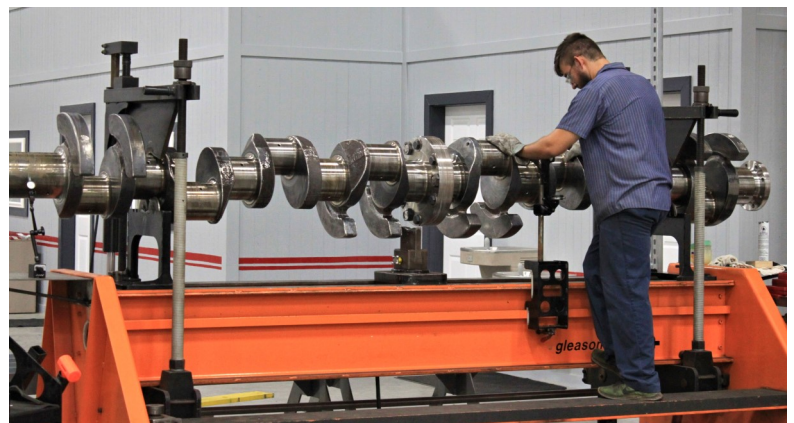




## Remanufacturing of Locomotive CRANKSHAFTS!

- ◆ Over 60 years of remanufacturing experience.
- ◆ Thorough 14 step process remanufacturing process, meeting or exceeding all OEM requirements.
- ◆ State of the art grinding machines to ensure the quickest turn-around time.
- ◆ Precision shot peening & crankshaft straightening equipment.
- ◆ Magnaflux testing equipment.
- ◆ Dynamic Crankshaft balancing equipment.
- ◆ Hard Chrome Plating.

Complete Rebuilds or Requalification Available!



Call (812)522-7200  
Email [jmasales@jmasales.com](mailto:jmasales@jmasales.com)

# JMA RAIL PRODUCTS CO.



**Air Compressors**



**Power Assemblies**



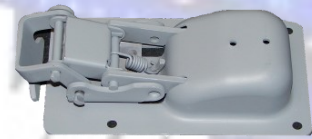
**Toilets**



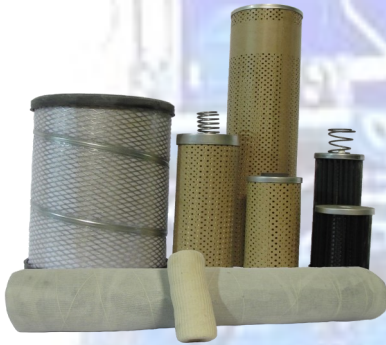
**Test Valves**



**Cab Fans**



**Car Body Door Latches**



**Filters**



**Couplers**



**Guru Valves**



**Water Treatments**



**Horns**



**Windows**



**Cooling Fans**



**Brake Heads**

**Air Compressors, Security Products, Cab Accessories, Truck & Wheel, Electrical Components, Engine Components, Brake Shoes, Rotating Electric, and Maintenance of Way**

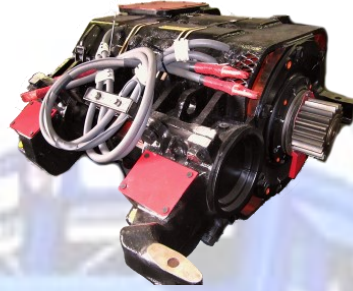


# From Coupler to Coupler, We Have You Covered!

JMA Rail Products' commitment is to provide outstanding product support and superior service to our customers, while offering competitive pricing for the highest quality products.



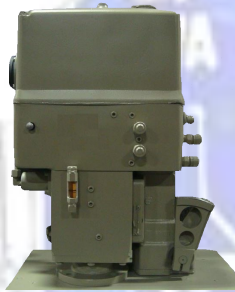
Brake Shoes



Traction Motors



Safety Signs



Governors



Brushes



Railroad Ties



Track Matting



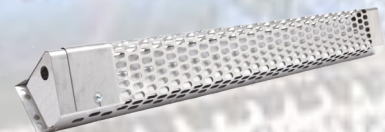
Snow Plows



Heaters



Spikes



Strip Heaters

JMA Rail Products prides itself on providing superior service to our customers. Our knowledgeable customer support team will help you determine the exact parts needed to meet your locomotive repair needs, at the same time providing quality products at the lowest possible cost.

JMA Rail Products component offering encompasses thousands of part numbers. Our large inventory of locomotive material allows us to promptly ship your orders, reducing expensive downtime.

**Call (812)522-7200**  
**Email [jmasales@jmasales.com](mailto:jmasales@jmasales.com)**

# New vision

## MANUFACTURING, INC.

### Ceiling Repair Kits



**Ceiling Repair Kit**



**Standard Ceiling Kit**



**Complete Hard Ceiling Panel**

**Ceiling Kits Fits most GP and SD locomotives.**

- 5151052** "Ceiling Repair Kit" *Hard Paneled Kit* (fig #1)  
Long term fix for old sagging panels.
- 5151060** "Standard Ceiling Kit" Includes all trim pieces & panels required for new installation (fig #2)
- 5151065** "Complete Ceiling Kit" includes Sub-Insulation
- 5151067** "Trim Only Kit" Includes: 9 black retainer strips, 1 "T", 2 Angle, and 6 Perimeter trim Pieces

#### **Additional Insulation Available**

To be installed between structure steel braces

- 5151050** Foam Ceiling insulation with pressure sensitive adhesive backing, priced by sheets of 8' x 4' x 1", min order qty 2 sheets
- 5151051** Foam Ceiling insulation with pressure sensitive adhesive backing, sold as a roll of 50' x 54' x 1"

**NEW!**

### **Complete Hard Ceiling Panel Kits! Switcher/MP Ceiling Kits!**

- 5151067** "Complete hard Ceiling Panel Kit" (fig #3)

#### **Ceiling Panels**

- NV-1-37-76** Vinyl Foam Panel, Flexible,  
1" x 37" x 76"
- NV-1-37-70** Vinyl Fiberglass Panel, Rigid,  
1" x 37" x 70"

#### **Trim Pieces**

- CM74-0013** T Trim Piece, male
- CM74-0014** Black Retaining Channel, female
- CM74-0015** Angle Trim Piece, male
- CM74-0016** Perimeter Trim Piece, male



## We Don't Take Vision Lightly!



A Style



B Style



A Style With  
Mounting Bracket

### Ditch Light Kits

|                                |         |
|--------------------------------|---------|
| A Style Single Ended Kit ..... | 4141010 |
| A Style Double Ended Kit ..... | 4140103 |
| B Style Single Ended Kit ..... | 4142010 |
| B Style Double Ended Kit ..... | 4144010 |

### Housings

|                                   |         |
|-----------------------------------|---------|
| A Style Ditch Light Housing ..... | 4141012 |
| B Style Ditch Light Housing ..... | 4142012 |

### Lugs & Glad hands

|                                    |          |
|------------------------------------|----------|
| Glad Hand to Blade Adapter .....   | .NV2000  |
| Lug, Traction Motor Lead, 1325 ... | 40039228 |
| Lug, Car Body Side, 1600 .....     | 40039229 |

### Bulbs

|                                    |         |
|------------------------------------|---------|
| 75V Ditch Light Halogen Bulb ..... | 6961711 |
| 30V Head Light Halogen Bulb .....  | 8156001 |
| LED Rough Service Bulb .....       | NV12011 |
| Rough Service Bulb .....           | 8094886 |
| 15W, 75V Bulb.....                 | 8116330 |
| 2W, 6-8V Dash Bulb.....            | 8140357 |
| 30W, 75V Bulb.....                 | 8190621 |
| 108W, 37.5V, 1828 Dash Bulb.....   | 8190199 |
| 25W, 75V Bulb.....                 | 8080403 |

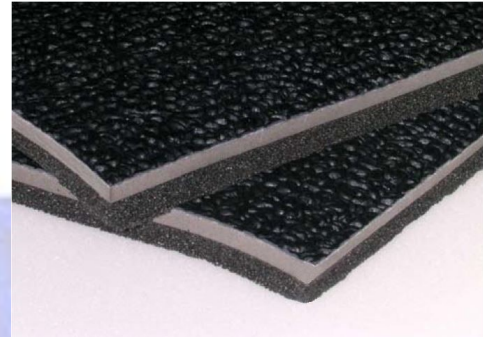
## High Grade Cab Flooring

Meets all

**FRA Smoke & Flame Requirements**

**Test Methods:**

ASTM E662-95 & ASTM E648-97



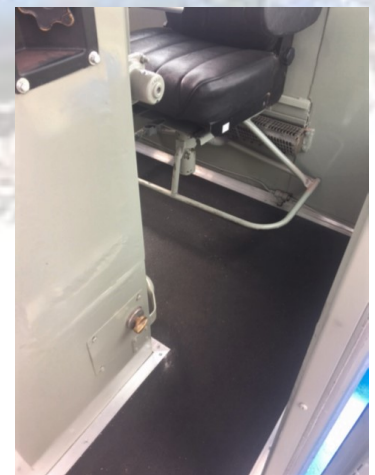
- Approved for Freight & Transit Locomotives
- Scuff & Slip Resistant
- Sound & Vibration Dampening
- Insulated for Temperature Control
- Moisture Resistant

Part # - 3131015

Roll of 225 Sq. Ft.

(54" x 50")

Covers Approximately  
2 1/2 Locomotive Cabs



New Vision began in 1994 with the objective of creating custom solutions for locomotive modifications. Over the years, New Vision has developed a variety of kits to solve problems. New Vision manufactures and supplies ceiling kits, ditch light kits, ditch light & headlight housings, halogen and LED bulbs, lugs, and gladhands.

**New Vision making safety and convenience top priority!**

**Call (812)522-7200**  
**Email [jmasales@jmasales.com](mailto:jmasales@jmasales.com)**



# UNITED SAFETY & SURVIVABILITY CORPORATION™



9012 Seat



9010 Seat



9009 Seat

United Safety designs, engineers, and manufactures high quality seats for the locomotive industry. As a leader in the industry, United Safety continues to develop the most durable, comfortable, and ergonomically designed seats to reduce fatigue and stress.

#### Features Include:

- Swivel base
- Adjustable armrests
- Multiple upholstery options
- Adjustable mechanical lumbar

Components are available for ALL existing seats; knobs, levers, upholstery, armrests etc...

Model numbers 9012, 9010 & 9009 are available in pedestal, tripod, or wheeled tripod mounts.

**Military ergonomical studies incorporated  
into all United Safety locomotive seats!**





# Manufacturing World-Class Locomotive Seating Since 1989



## G2M Seat

### Benefits:

- Seat Recline/Tilt
- Seat Rotation
- Ergonomic Design to Reduce Fatigue & Stress
- Adjustable Mechanical Lumbar Support
- Adjustable Back Recline
- Fore/Aft Adjustment
- Seat Cushion Slide
- Optional Scissor Mount Shown



## Foot Rests

### Benefits:

- Increase in operator comfort
- Assists in promoting optimum seating position which can positively effect seating posture for less fatigue
- Floor mount version shown (Wall Mount available)



## Jump Seat

### Benefits:

- Spring loaded brackets so seat stays in the up position when not used
- Durable Construction
- Space saver
- Quality vinyl cover for long life
- Heavy Duty Springs

## Sun Shades



Interior View



Exterior/Reflective

### Benefits:

- Improved Safety for Engineers
- Improved Visibility
- Cooler Cab Temperatures
- Energy Savings
- Widths available: 25.75", 45", 52.75"

United Safety is Certified to AAR & FMVSS & ISO Registered Since 1987

**Call (812)522-7200**  
**Email [jmasales@jmasales.com](mailto:jmasales@jmasales.com)**



**POWER PARTS *Sign* COMPANY**  
A DIVISION OF RI-DEL MFG, INC.

Track/MOW Signs **Whatever your NEEDS may be ...**

POWER PARTS Sign COMPANY manufacturers more than just signs! Ask us about volume pricing for our crew pack holders, decals, fusee cases, blue flags, targets and more!



**Fusee Cans**  
#50026-23



**#50003-EG-5-2**



**#50030-19**



**#1900/ Racor**



**#5001**

- Railroad Signs
- Railroad Etch & Fill Plates
- Railroad Equipment
- Decals
- Railroad Marking Kits
- Municipal Signs
- Porcelain Enamel Signs
- Letters
- Numbers
- Special Orders
- Blue Flags



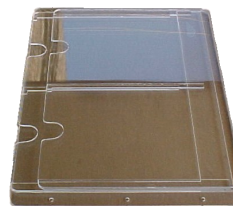
**Locomotive Number Boards**  
#8146588  
#8182582



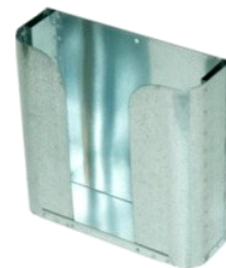
**Flag Holders**  
#50026-18



**Turbo Screen**  
#9557143



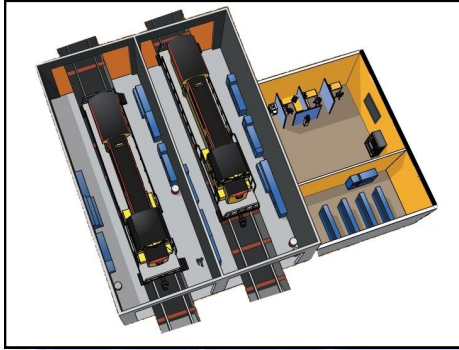
**Card Holders**  
#90260-4



**Crew Pack Holders**  
#50026-34



## Parts Inventory Management



Our service model is designed to reduce the “waste” in your organization, while keeping you on track. Whether you need a complete organizational overhaul or you simply need to rid your system of obsolete products, we tailor our services to meet your needs! We believe in vendor managed... not vendor controlled. You select the programs that fit your operation and we'll do the rest.

### Car Shop

- Fasteners
- 300 lb. Pipe Fittings, Nipples and Valves
- Air Brake Hardware
- Air Brake Flanges
- Air Brake Gaskets
- Welding Supplies

### Locomotive Repair

- Greener Chemical Line
- Hydraulics
- Brass Fittings
- Terminals
- Degreasers
- Lubricants
- Mini Bulbs

### Work Equipment

- Hydraulic Hoses
- Air Brake Fittings
- Spray Paints
- Aerosol Chemicals
- Lights
- Grinding Wheels
- Fasteners
- Taps/Drill Bits
- Radiator Hoses

### Engineering

- Maintenance Supplies
- Storage Equipment
- First Aid Supplies
- Frog Bolts
- Switch Bolts
- Track Bolts
- Bridge Bolts

**We Believe in Vendor Managed... Not Vendor Controlled.**

**Call (812)522-7200**  
**Email [jmasales@jmasales.com](mailto:jmasales@jmasales.com)**



**Proudly Representing**



**ENGINEAIR INC**



**POWER PARTS *Sign* COMPANY**  
A DIVISION OF RI-DEL MFG, INC.



**UNITED SAFETY**  
& SURVIVABILITY CORPORATION™



835 E. 10th St. Seymour, IN 47274

Phone: (812)522-7200 | Fax: (812)522-1150

[jmasales@jmasales.com](mailto:jmasales@jmasales.com) | [www.jmarail.com](http://www.jmarail.com)